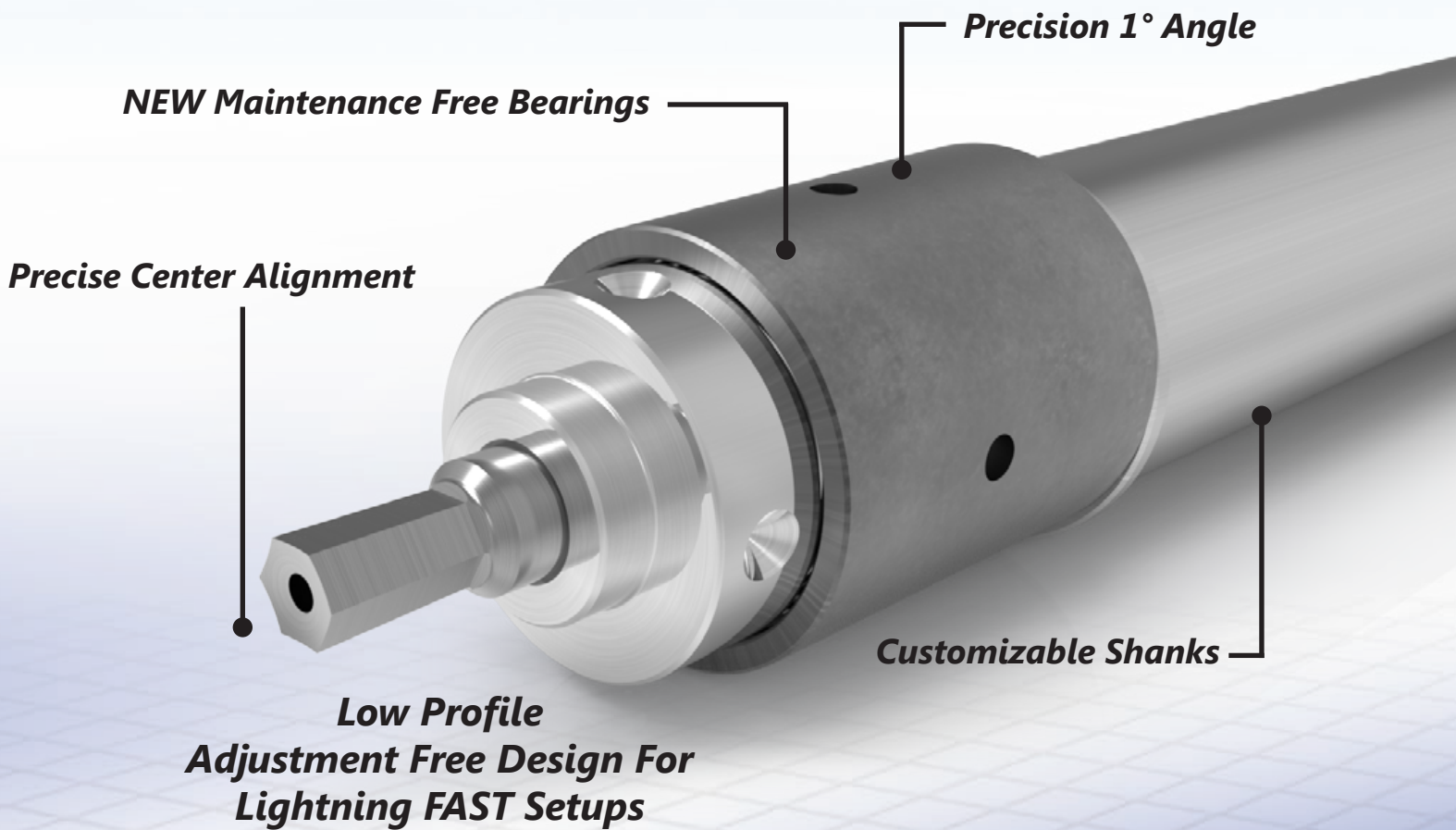


Swiss-Type Rotary Broaching Solutions

Rotary / Wobble Broaching on Swiss Type CNC Machines is a cost effective way to produce hex, square and hexlobular drive features and internal polygon forms in one operation. The Broaching process takes only seconds to produce the profile and parts can be finished complete out of the machine without the need for the broaching to be performed as a secondary operation.

GenSwiss "Swiss-Type" broach holders are designed specifically to make broaching fast & easy to perform in machines such as Citizen, Star, Tsugami, Tornos & other Swiss Turning centers.



COMPLETE PARTS - ONE SETUP

Rotary Broaching Rapidly Generates Hexagon, Square, Hexlobular and Other ID Forms

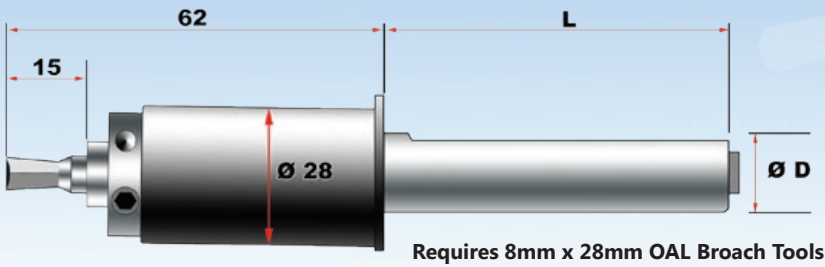
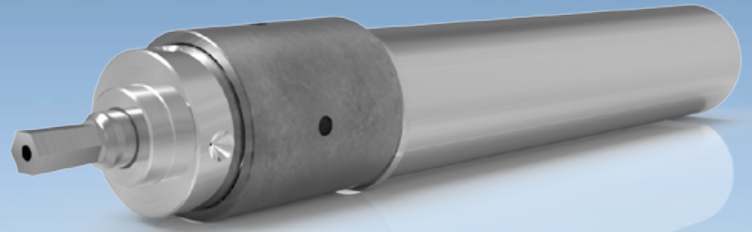
See A Video Of It In Action @ genswiss.com/toolingvideos.htm

www.rotarybroaching.net

Industry Leading Swiss-Type Rotary Broaching Solutions

2160 Series - Best Choice for Swiss Machines

- NO CENTER INDICATING REQUIRED
- Holds 8mm Shank Broaches - .050" - .375" Hex Size
- Capable of Withstanding 2250 lbs of Thrust
- Easy To Set Up & Use
- Shank Length Can be Modified to your Application



| Part No. Inch | D | L |
|------------------|-------|-------|
| RBH-2160-158-038 | .625" | 1.50" |
| RBH-2160-190-100 | .750" | 4.00" |
| RBH-2160-254-120 | 1.00" | 4.75" |
| Part No. Metric | D | L |
| RBH-2160-120-038 | 12 | 38 |
| RBH-2160-140-038 | 14 | 38 |
| RBH-2160-160-038 | 16 | 38 |
| RBH-2160-200-100 | 20 | 100 |
| RBH-2160-220-100 | 22 | 100 |
| RBH-2160-250-100 | 25 | 100 |

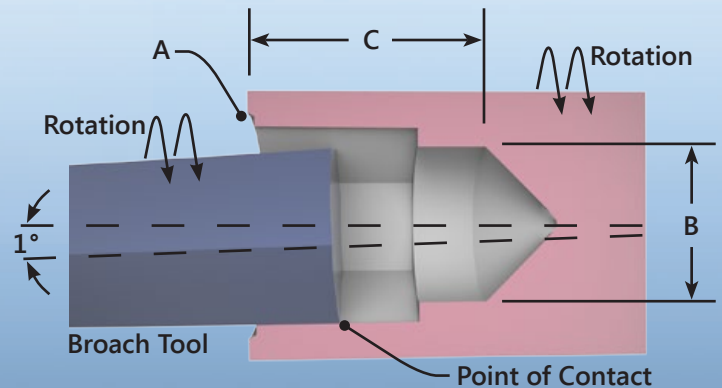


HiCo8 Broach Tools

- Precision Ground to Tolerances of +/- .0004"
- HiCo8 Swiss Tool Steel Provides Extended Tool Life
- Qualified Overall Lengths & Shank Diameters
- Optional Pressure Vents Prevent Hydraulic Locking
- Special Sizes made from USA Stocked HiCo8 Blanks
- Hexagonal & ISO Hexlobular Sizes Available
- Fast Delivery on Special Tolerance Hexagonal Sizes

Internal Broaching Tips

- Prepare the broach hole with a 60-90° chamfer slightly larger than the largest dimension of the broach tool.
- The hole diameter should be drilled approximately 1% larger than the length across the flats of the hex shape.
- Drill the hole to a length 1.4 times the length across the flats of the hex shape. If chips need to be removed, re-drill the hole with a slightly smaller drill size.



GenSwiss
 Advancing Small Parts Manufacturing
 6 Old Stage Rd, Westfield, MA 01085
 413-562-4800 | www.genswiss.com

Distributed by